

NBN Products Pressure Earrings

Glori® Hypo-Allergenic Pressure Earrings Brent Pressure Earrings for Post-Op Keloid Lobal Surgery

Our specially designed Pressure Earrings feature a self-adjusting clasp which exerts a comfortable, even pressure on both sides of the ear lobe.

The patient places the earring on the lobe and gently squeezes to activate the pressure.

The Pressure Earrings have a heavy 24K Gold Plating for lasting durability. Our special Hypo-Allergenic coating is then applied and heat-cured as a final protection for the patient.

We offer a variety of styles to encourage prolonged usage of the pressure earrings and to fit your patients' needs.

- 10% Discount for Orders of 3 or More Pairs
- Self-Adjusting Clip
- Sleeper Available for Overnight Use
- Sleepers, Shells and Shields are Available in a Silver Color Upon Request
- Silicone Pads Available for a Charge of \$2.00/Pair



Pearl Insert
P-3754P
\$47.25



(ALSO AVAILABLE IN WIDE LOBE)

Black Onyx
P-3754O
\$47.25



Silver Insert
P-3754I
\$47.25



Shell
P-3754H
\$47.25



Oval
P-3752
\$47.25



Shield
P-3754S
\$47.25



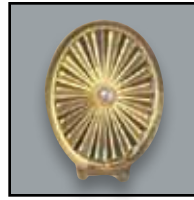
Square Style
P-3755 Avg. Lobe \$47.25
P-3753 Wide Lobe \$47.25



Sleeper Style
P-3748 Avg. Lobe \$38.75
P-3749 Wide Lobe \$38.75



Children/Upper Ear
With Silicone Pads Only
P-3747 \$38.75



Starburst
P-3763
\$47.25



Brent Pressure Earring
P-3750
\$40.75



Brent Pressure Earring
Wide Lobe P-3751
\$96.00



P.O. Box 122 • Liberty, MO 64069-0122 USA
800-792-9795 • Fax 816-407-7172
nina@nbnproducts.com



P.O. Box 122 • Liberty, MO 64069-0122 USA
800-792-9795 • Fax 816-407-7172
nina@nbnproducts.com

PAYMENT METHOD: (NO PERSONAL CHECKS)

- MONEY ORDER
- MASTERCARD
- VISA

CARD NUMBER

EXPIRATION DATE

MONTH YEAR

X _____
CREDIT CARD CUSTOMER SIGNATURE

PAYMENT MUST ACCOMPANY ORDERS

CATALOG #	QUANTITY	DESCRIPTION	PRICE

SHIPPING & INSURANCE CHARGES

- DOMESTIC ORDERS \$9.50
- INTERNATIONAL ORDERS (INCLUDING CANADA) \$18.00
- 2ND DAY BLUE UPS AIR \$24.00
- EXPRESS MAIL \$23.00

SHIPPING CHARGES SUBJECT TO CHANGE

MERCHANDISE TOTAL	
SHIPPING CHARGES	
SALES TAX	
MO RESIDENTS ONLY	
TOTAL U.S. CURRENCY ONLY	

SHIP TO: NAME _____
(PLEASE PRINT)
ADDRESS _____
CITY _____ STATE _____ ZIP _____
PHONE _____
(AREA CODE) (DAYTIME PHONE #)